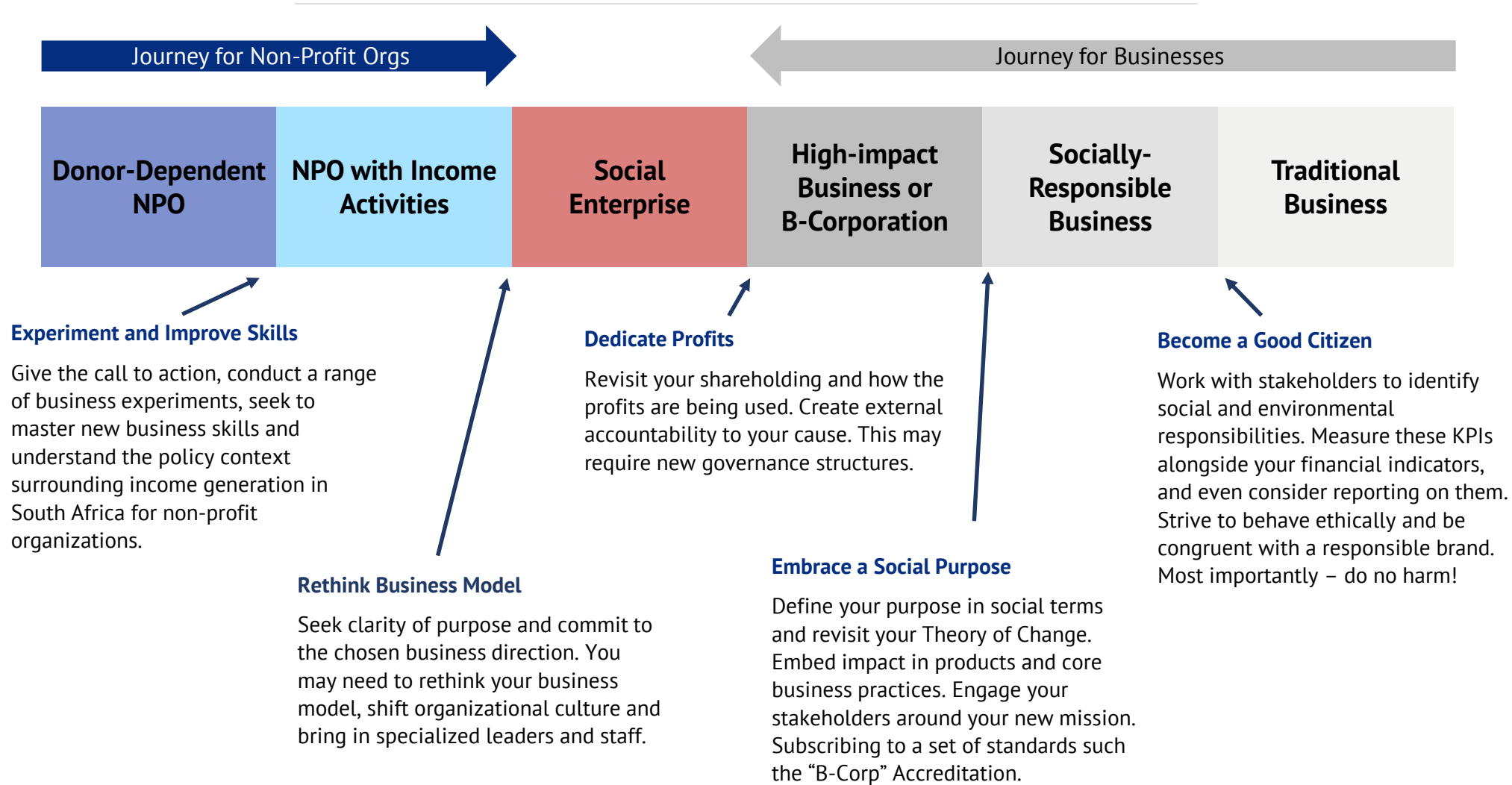


The Journey To Social Enterprise

I believe that social enterprise is more of a direction than an end state. In South Africa, thousands of organizations are heading in this direction. This brief examines the journey and the transition points that need to be managed. See link below for detailed presentation.



MARCUS
COETZEE

SOCENT
STRATEGY
#006



Marcus Coetzee is a South African strategy consultant who specializes in social enterprises. He also helps leaders to think clearly and find encouragement.

www.marcuscoetzee.co.za

@MarcusCoetzee

